



Campus Guide to Emergency Equipment and Procedures



Included in this booklet:

- Information on and locations of AED Equipment on campus
- Information on and locations of Emergency Evacuation Equipment on campus
 - CPR Trained staff on campus



EVC Administrative Services

Table of Contents

Campus AED & Evacuation Chair Information:

- 2 EVC AED Information
- 3 EVC Evacuation Chair Information
- 4 AED Management Committee & CPR Trained Staff
- 5 EVC Map with AED and Evacuation Chair Locations
- 6 EVC Evacuation Map

AED & Evacuation Chair Information by Building:

7	West Campus	Automotive Technology
8	West Campus	Cedro
9	West Campus	Library/Ed Tech Center (LETC)
10	Central Green	Physical Education/Gymnasium
11	Central Green	Gullo I
12	Central Green	Student Center/Health Services
13	South Campus	Fitness Center
14	South Campus	Math, Science, Social Studies (MS3)
15	North Campus	Acacia
16	North Campus	Sequoia
17	East Campus	Visual and Performing Arts (VPA)
18	East Campus	Visual Arts





Evergreen Valley College

Automated External Defibrillator (AED) Program

Evergreen Valley College has several automated external defibrillator (AED) units installed around campus. An important part of EVC's commitment to providing a safe environment for our campus community is providing the tools necessary to assist trained personnel in a medical emergency. AED units have proven to be effective in helping to save countless lives and we are excited to be able to provide this invaluable equipment at our campus.

What is an AED?

According to the American Heart Association, an AED is a portable device that delivers an electric shock to the chest to the heart, which can potentially stop an irregular heart beat and restore the heart to its normal rhythm¹. An AED is often used by first responders in conjunction with CPR to save lives.



Where can I get more information?

Please visit the EVC Administrative Services website for helpful links and resources on AEDs, including a campus map marked with AED locations.

¹ American Heart Association: www.heart.org



Where are the AED units at EVC?

Evergreen Valley College currently has 9 units installed in various buildings on campus. These buildings are identifiable by a decal on the door or window closest to the AED unit and triangular wall signs have been placed above each installed unit. The AED devices are kept within wall-mounted cases that have been armed with an alarm that will sound once the case is opened. The locations of these units were carefully selected with the safety of our students, faculty, and staff in mind and have been placed in the following buildings: **Acacia, Auto Tech, Fitness Center, Gullo I, Physical Education (Gymnasium), LETC, MS3, Student Services Center (Health Services office), and VPA**. These units are managed and maintained by a committee of individuals who perform routine checks to ensure that the equipment stays operational.



Evergreen Valley College

Emergency Evacuation Chair Equipment

Evergreen Valley College has several Emergency Evacuation Chairs installed around campus. These chairs are an important part of EVC's commitment to providing a safe environment for our campus community by providing the tools necessary to assist trained personnel in an emergency evacuation. Emergency evacuation chairs allow for the safe evacuation of mobility-impaired individuals in an emergency situation.

What is an Evacuation Chair?

An Evacuation Chair is a device that assists in the safe transportation of a mobility-impaired individual down stairs in the case of an emergency or evacuation. The chairs at EVC are designed to be operated by a single person, are lightweight, have adjustable restraints, dual seat positions, and have a 400lb weight capacity.



Where can I get more information?

Please visit the EVC Administrative Services website for helpful links and resources on the Emergency Evacuation Chairs, including a campus map marked with their locations. Additionally, the following links will direct you to helpful informational videos:

Click [HERE](#) for a video on evacuation chairs. ¹

Click [HERE](#) for an instructional video on chair use. ²

¹ <https://evac-chair.com/watch-video/>

² <https://www.youtube.com/watch?v=OS-ujoYacoA>

Where are the Evacuation Chairs located?

Evergreen Valley College currently has **9 Emergency Evacuation Chairs installed in every building with more than one floor.** These chairs are identifiable by their yellow covers with the Evac+Chair logo and wall signs have been placed above each installed chair. The locations of these units were carefully selected with the safety of our students, faculty, and staff in mind and have been placed in the following buildings: **Acacia, Gullo I, Physical Education (Gymnasium), LETC, MS3, Visual Arts Building, VPA, Cedro, and Sequoia.** These chairs are monitored and routinely checked in order to ensure that the equipment stays operational and available for use.



AED Management Committee

No.	Location	Managed By
1	Acacia	Colleen Cuen
2	Auto Tech	Campus Facilities Coordinator
3	Fitness Center	Lisa Renteria
4	Gullo I	Rafael Vasquez-Perez
5	Gymnasium	Lisa Renteria
6	LETC	Campus Facilities Coordinator
7	Physical Education	Lisa Renteria
8	MS3	Rafael Vasquez-Perez
9	Student Services	Janice Assadi
10	VPA Theatre	Campus Facilities Coordinator







CPR/AED Trained Staff Members

The following people have been trained to administer CPR and utilize AED equipment if needed

Name	Department	Main Location on Campus
Anthony Euley	CTSS	Campus wide
Arthur Azevedo	Grounds	Campus wide
Barbara Tisdale	Nursing	Sequoia
Colleen Cuen	Administrative Services	Acacia
Danielle Brooks	Nursing	Sequoia
Elaine Kafle	Nursing	Sequoia
Eugenio Canoy	CTSS	Campus wide
Garry Johnson	Nursing	Sequoia
George Bouzek	CTSS	Campus wide
Joe Barraza	CTSS	Campus wide
Jorge Quezada	Grounds	Campus wide
Karen Cheung	Nursing	Sequoia
Linh Chung	CTSS	Campus wide
Maureen Adamski	Nursing	Sequoia
Nancy Lin	Nursing	Sequoia
Pat Braun	Nursing	Sequoia
Poonam Khare	Nursing	Sequoia
Rafael Hernandez	Grounds	Campus wide
Ralph Jackson	Affirm	Acacia
Raniyah Johnson	Student Activities	Gullo I
Raymond Wu	CTSS	Campus wide
Sarai Minjares	EOP&S	Student Center
Sue Wetzal	Nursing	Sequoia
Susana Machado	Nursing	Sequoia
Tammara Chavez	Veteran's Center	Gullo II

**Evergreen Valley College
Emergency Equipment Map**

 AED Unit

 Evacuation Chair



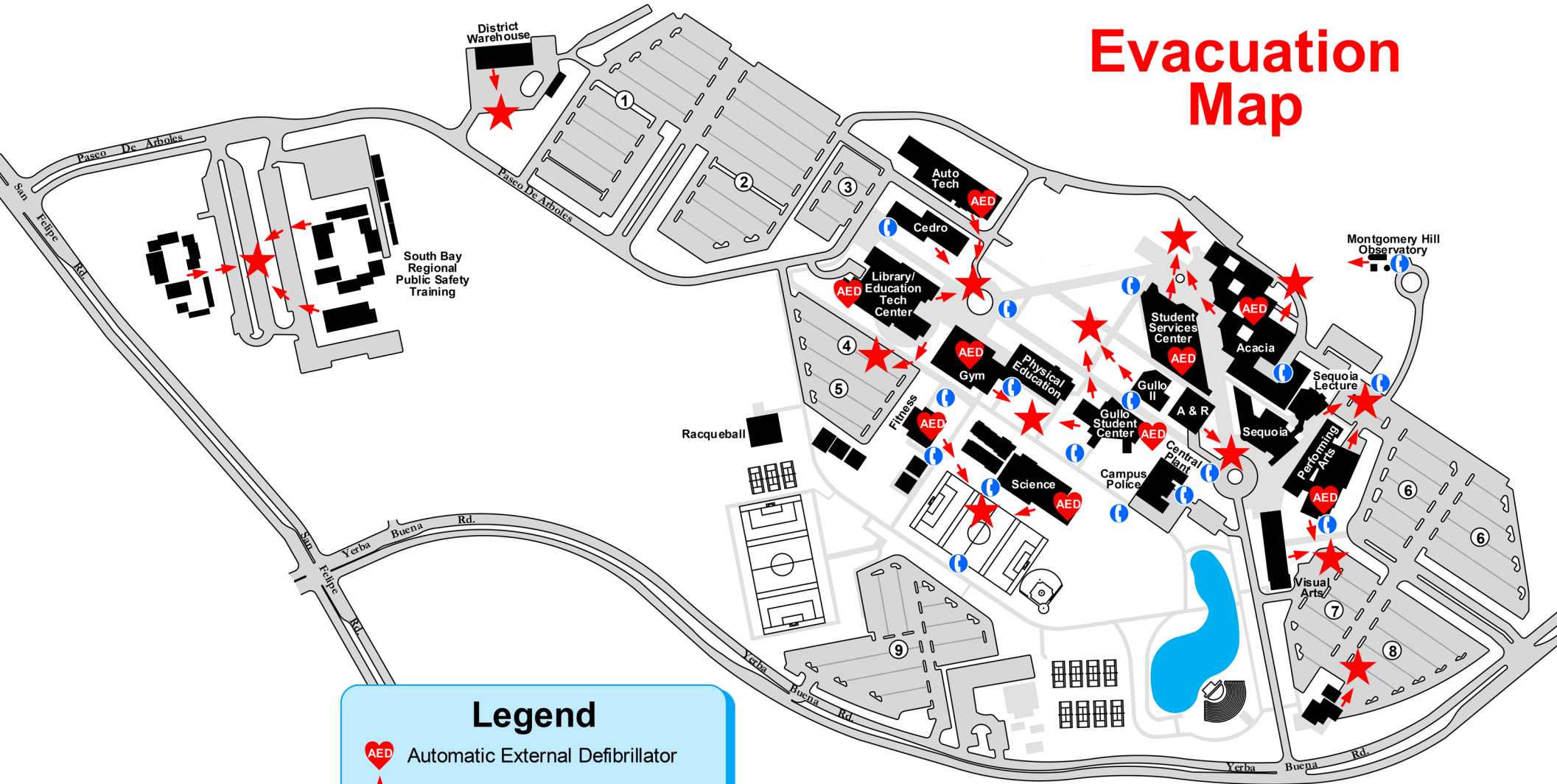
 Emergency Phone

 NORTH

WEST CAMPUS CENTRAL GREEN NORTH CAMPUS SOUTH CAMPUS EAST CAMPUS CAMPUS POLICE



Evacuation Map



Legend

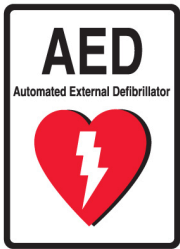
- Automatic External Defibrillator
- Evacuation Area
- Exit Pathway
- Parking Lot Number
- Emergency Phone



Acacia



Emergency Equipment Located in this Building

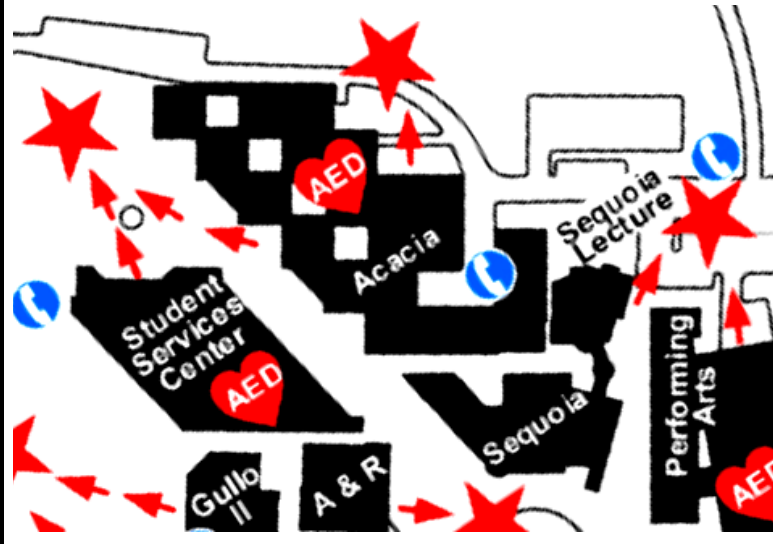


The AED Unit is located in the Business Services Office lobby, room AC-115.

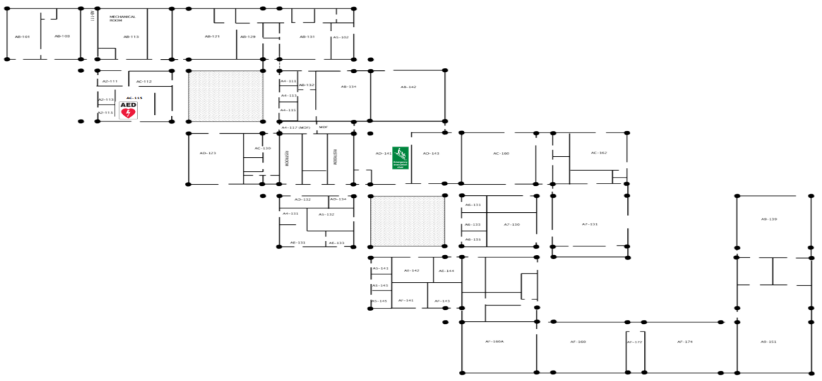


The Emergency Evacuation Chair is located in the stairwell.

Emergency Exit Paths and Evacuation Area(s) for this Building



Emergency Equipment and Building Pictures



Sequoia



Emergency Equipment Located in this Building

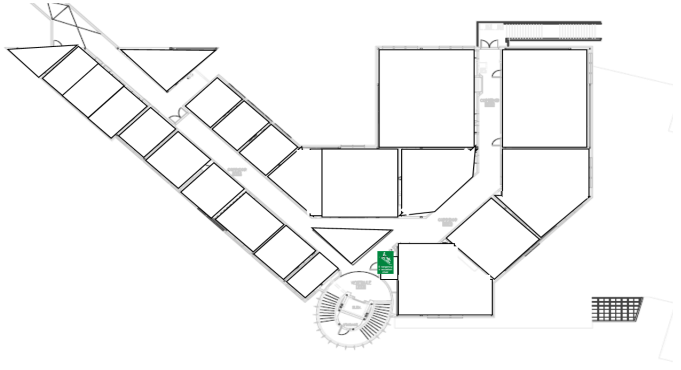


The Emergency Evacuation Chair is located at the top of the main entrance stairwell, near the elevator.

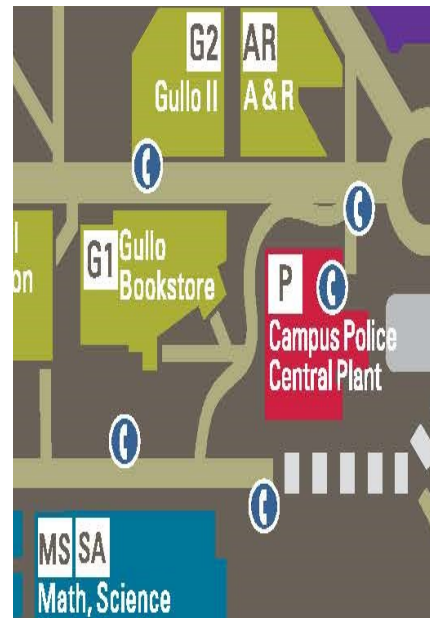
Emergency Exit Paths and Evacuation Area(s) for this Building



Emergency Equipment and Building Pictures

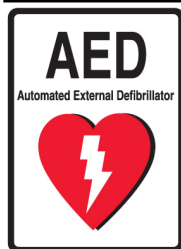


Gullo I



Emergency Equipment Located in this Building

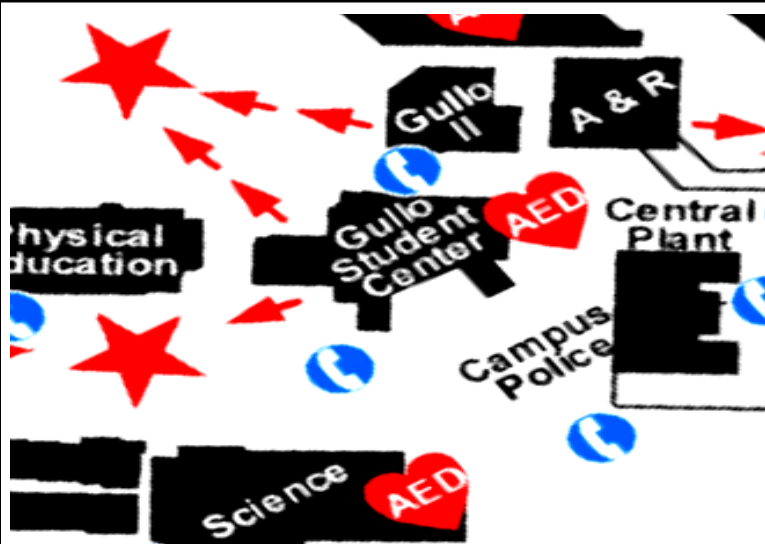
Emergency Exit Paths and Evacuation Area(s) for this Building



The AED Unit is located in the first floor lobby entrance close to the Physical Education building.



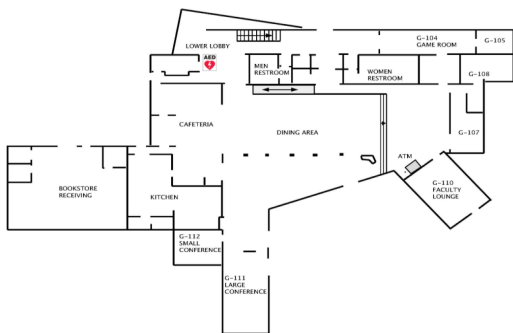
The Emergency Evacuation Chair is located on the second floor hallway near the Bookstore.



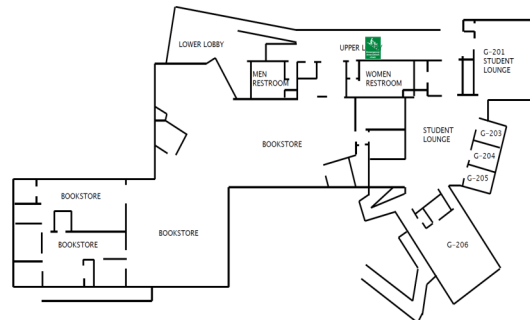
Emergency Equipment and Building Pictures



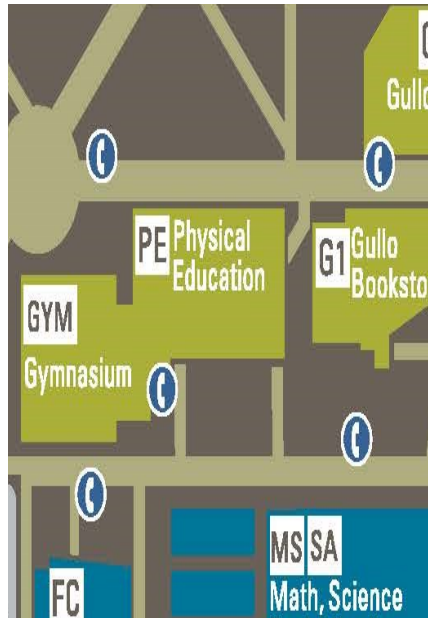
Gullo I —First Floor AED Location



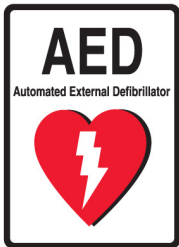
Gullo I —Second Floor Evac Chair Location



Physical Education / Gymnasium



Emergency Equipment Located in this Building

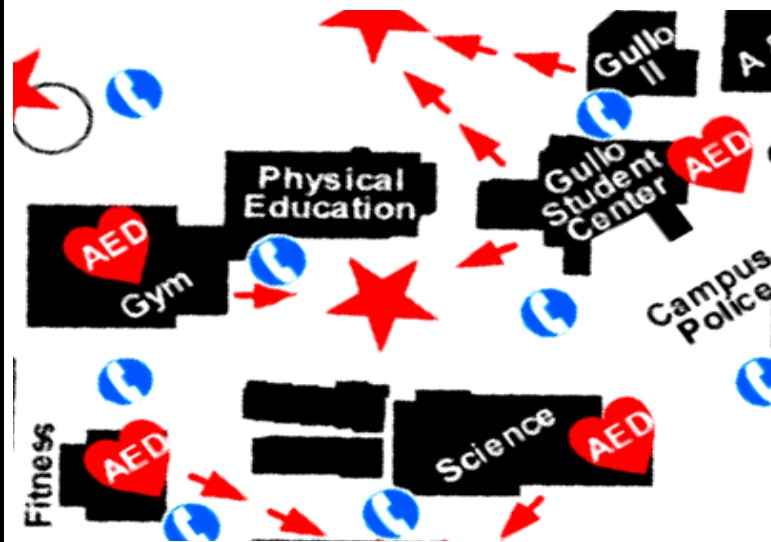


The AED Unit is located on the first floor in the Gymnasium entrance.



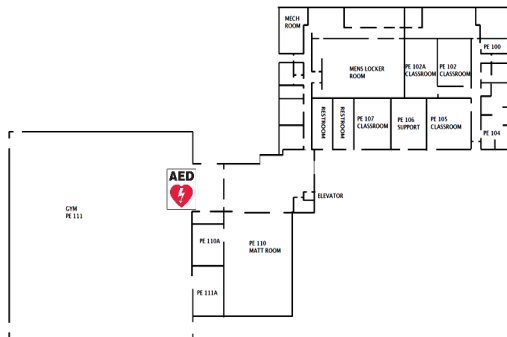
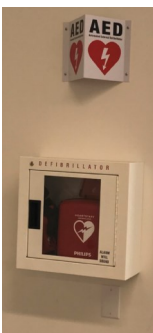
The Emergency Evacuation Chair is located on the second floor at the top of the stairs.

Emergency Exit Paths and Evacuation Area(s) for this Building

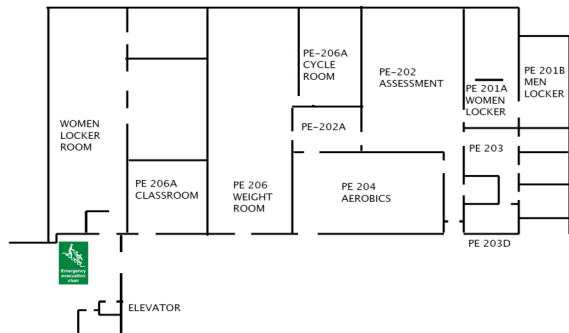


Emergency Equipment and Building Pictures

Physical Education —First Floor AED Location

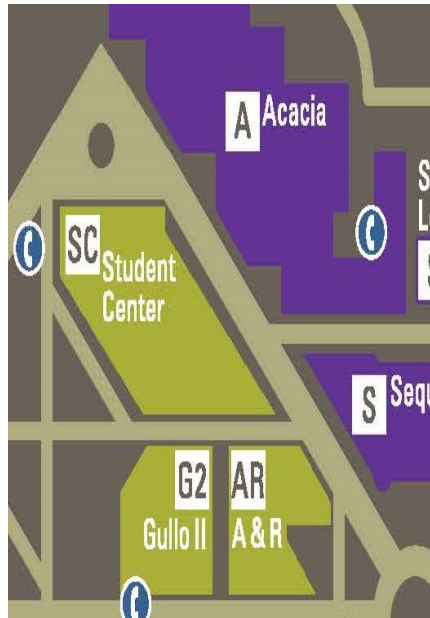


Physical Education —Second Floor Evac Chair Location

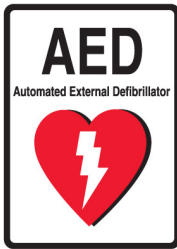




Student Services Center / Health Services



Emergency Equipment Located in this Building

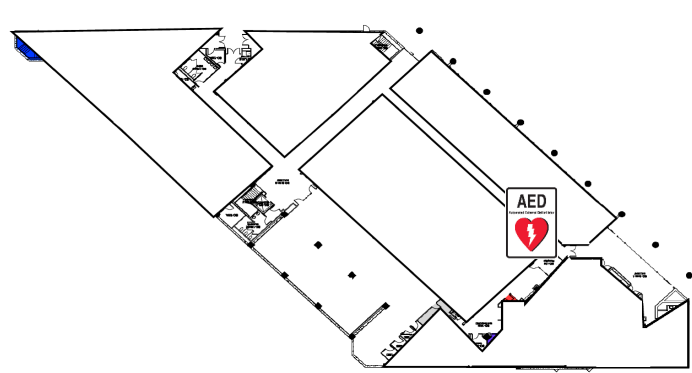


The AED Unit is located on the first floor in the hallway across from the Health Services entrance and just next to the Financial Aid office.

Emergency Exit Paths and Evacuation Area(s) for this Building

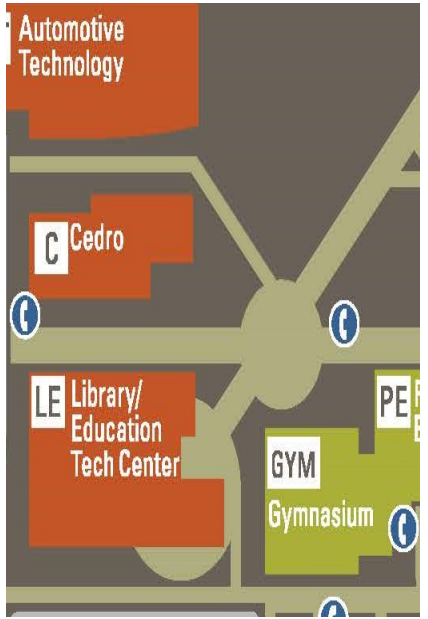


Emergency Equipment and Building Pictures





Cedro

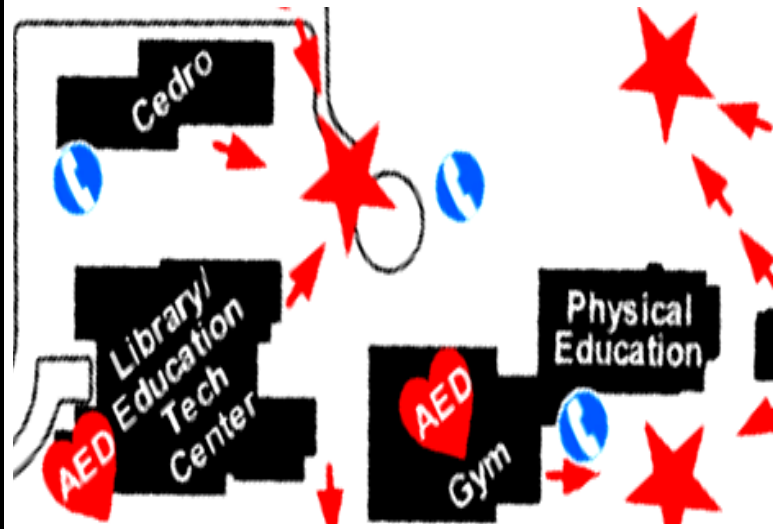


Emergency Equipment Located in this Building

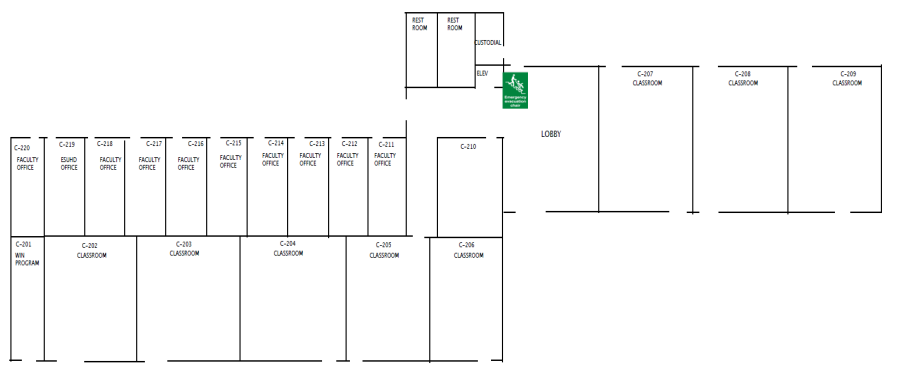


The Emergency Evacuation Chair is located at the top of the main lobby entrance stairwell.

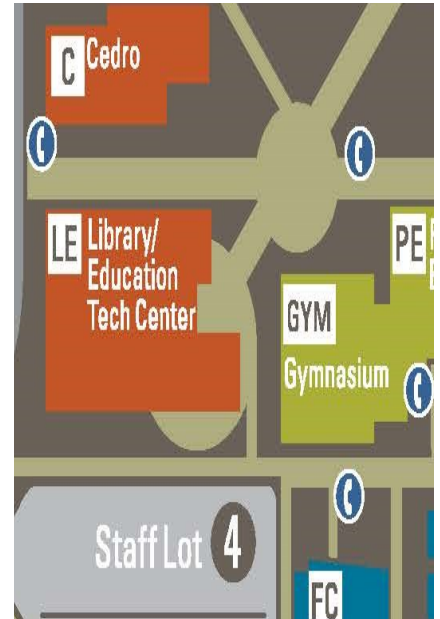
Emergency Exit Paths and Evacuation Area(s) for this Building



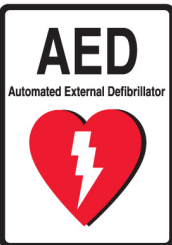
Emergency Equipment and Building Pictures



Library/Education Tech Center (LETC)



Emergency Equipment Located in this Building

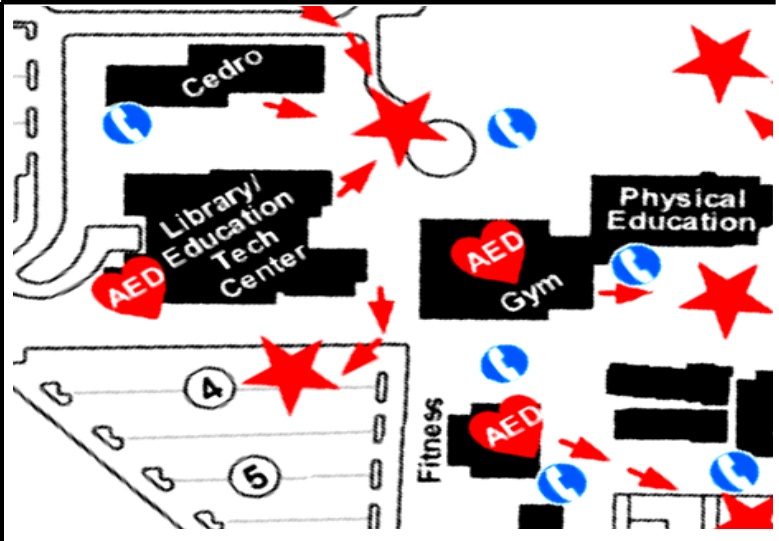


The AED Unit is located on the second main floor lobby entrance near Mishra, close to the restrooms and entrance to the computer lab.

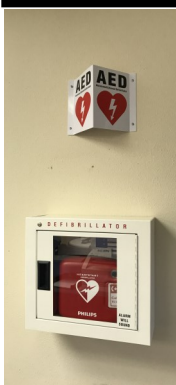


There are Emergency Evacuation Chairs located at the top of the third floor staircase.

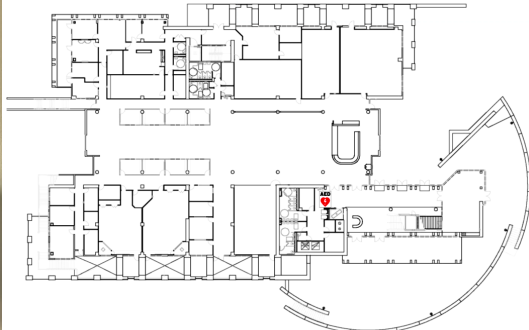
Emergency Exit Paths and Evacuation Area(s) for this Building



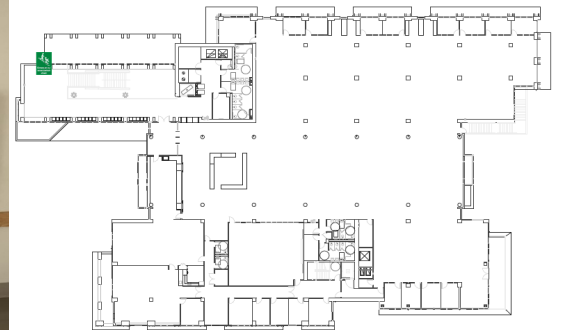
Emergency Equipment and Building Pictures



LETC—First Floor AED Location



LETC—Second Floor Evac Chair Location

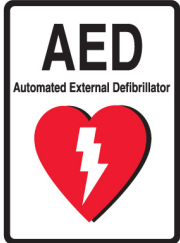




Automotive Technology

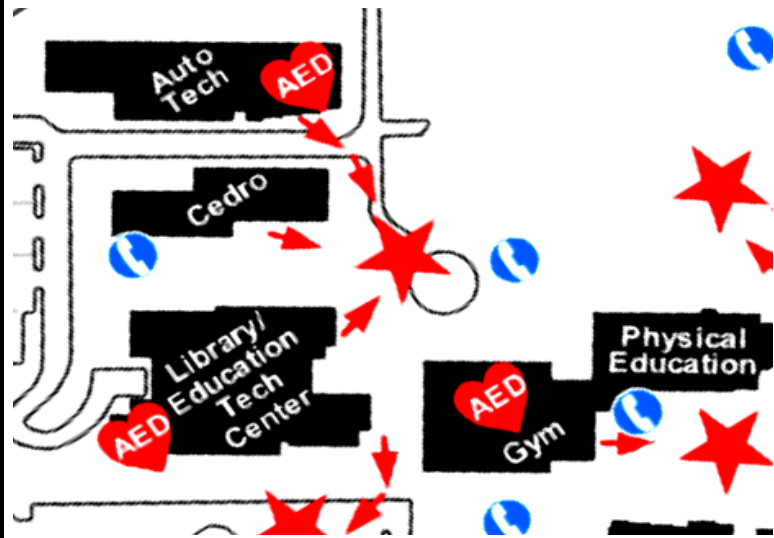


Emergency Equipment Located in this Building

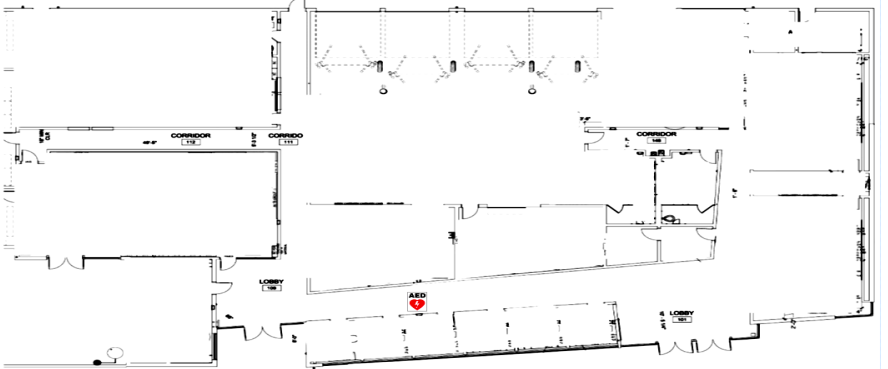


The AED Unit is located in the main hallway accessible from the front entrances, near the fire extinguisher and across from the student lockers.

Emergency Exit Paths and Evacuation Area(s) for this Building

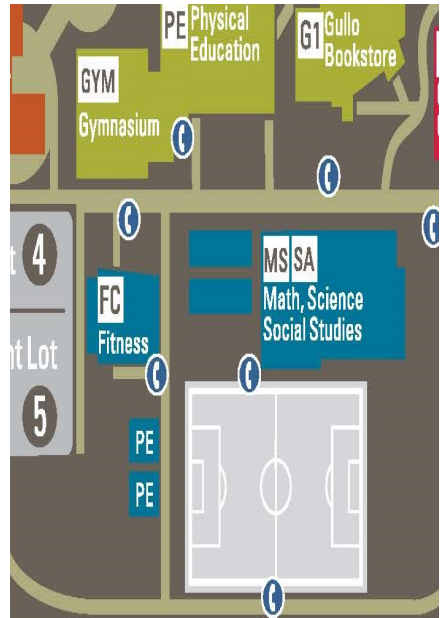


Emergency Equipment and Building Pictures

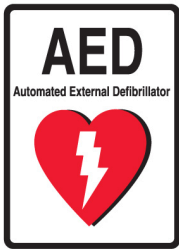




Fitness Center

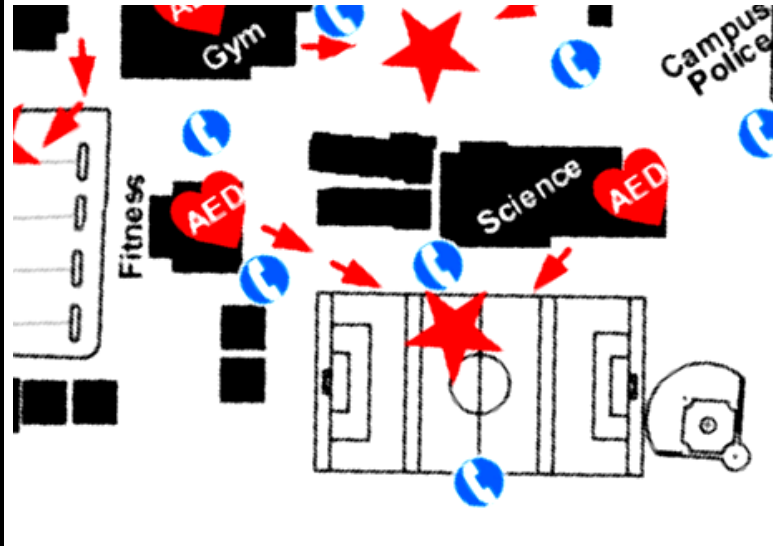


Emergency Equipment Located in this Building

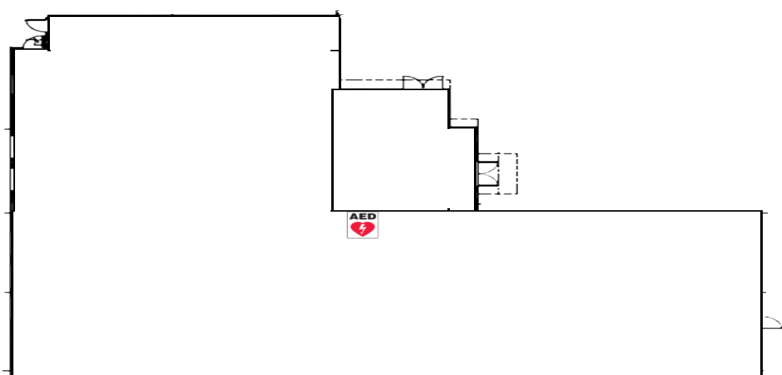
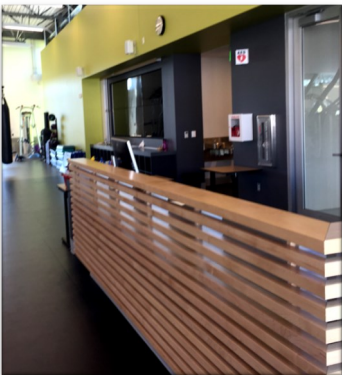


The AED Unit is located in the main building area behind the front service counter.

Emergency Exit Paths and Evacuation Area(s) for this Building

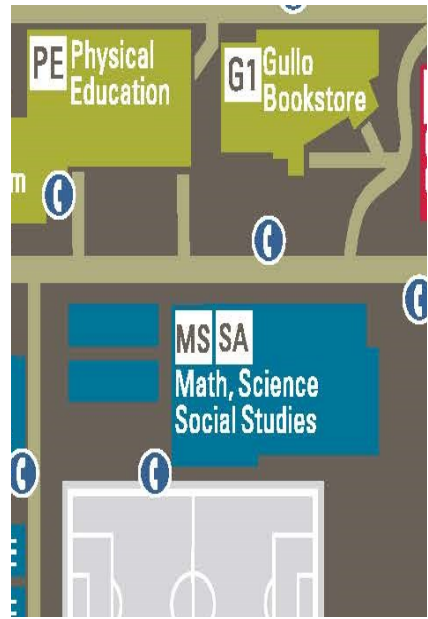


Emergency Equipment and Building Pictures

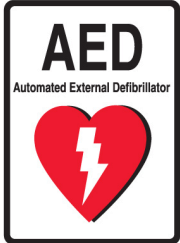




Math, Science, & Social Studies (MS3)



Emergency Equipment Located in this Building

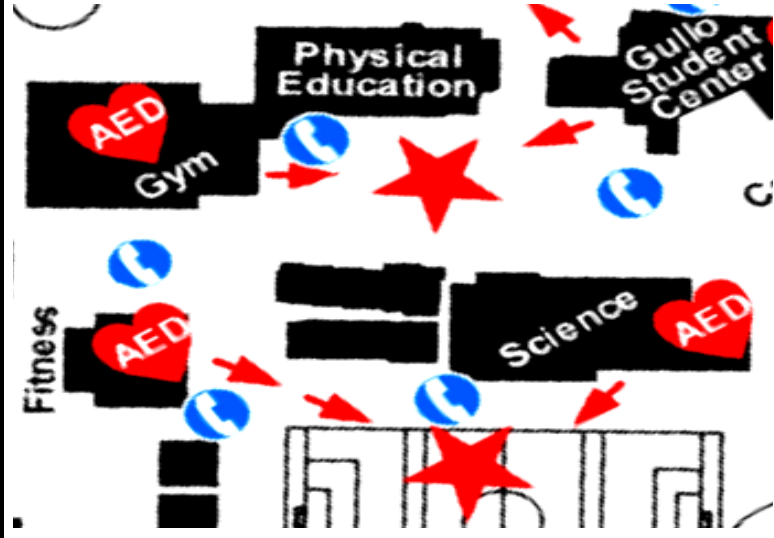


The AED Unit is located in the first floor hallway of the MS3 building nearest the entrance across from the Gullo I Cafeteria/ Bookstore building.

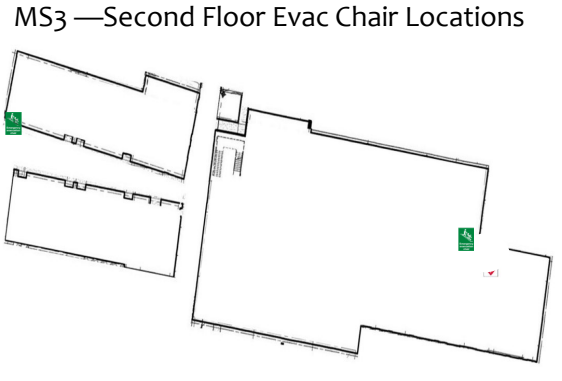
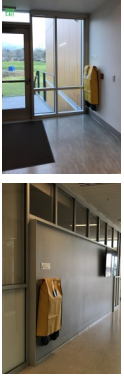
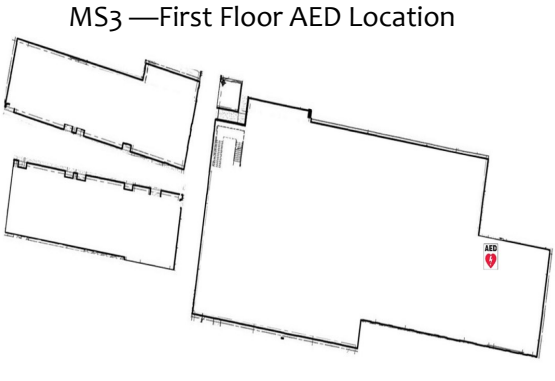
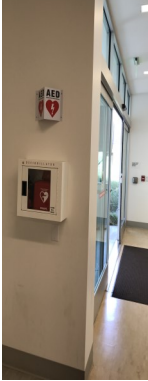


Emergency Evacuation Chairs have been installed at the top of the staircases on each end of the MS3 building.

Emergency Exit Paths and Evacuation Area(s) for this Building



Emergency Equipment and Building Pictures



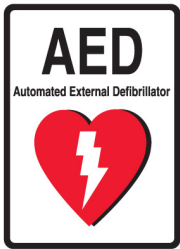


East Campus

Visual Performing Arts / Theater

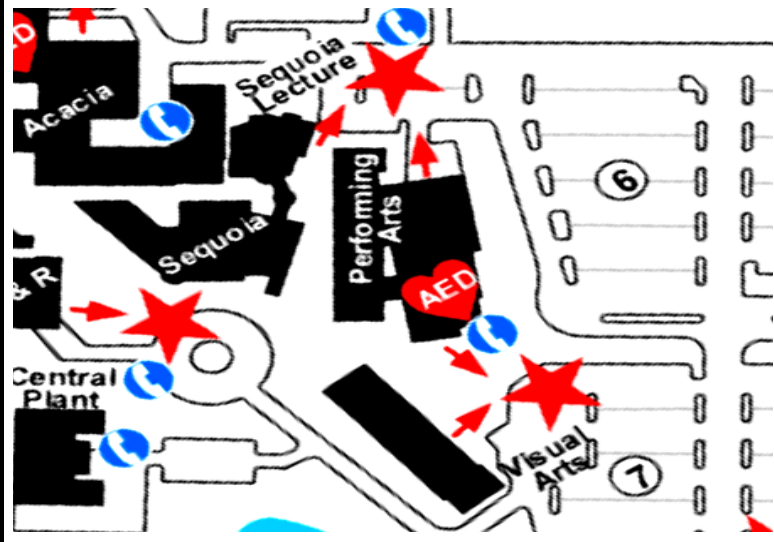


Emergency Equipment Located in this Building



The AED Unit is located in the first floor hallway of the Visual Performing Arts (VPA) building in the Theater lobby area.

Emergency Exit Paths and Evacuation Area(s) for this Building

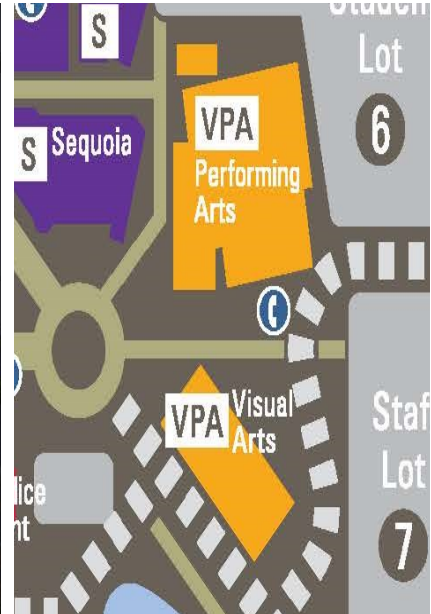


Emergency Equipment and Building Pictures





Visual Arts Building

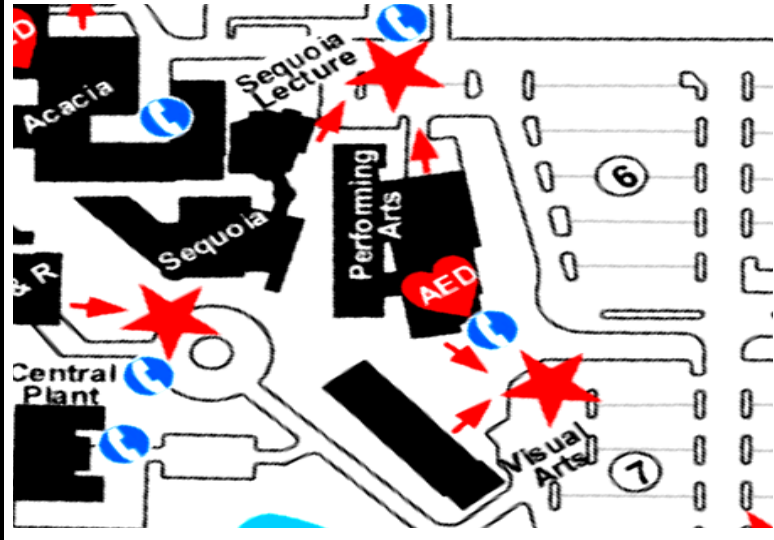


Emergency Equipment Located in this Building



The Evacuation Chair is located on the second floor of the Visual Arts Building at the top of the main entrance staircase.

Emergency Exit Paths and Evacuation Area(s) for this Building



Emergency Equipment and Building Pictures

